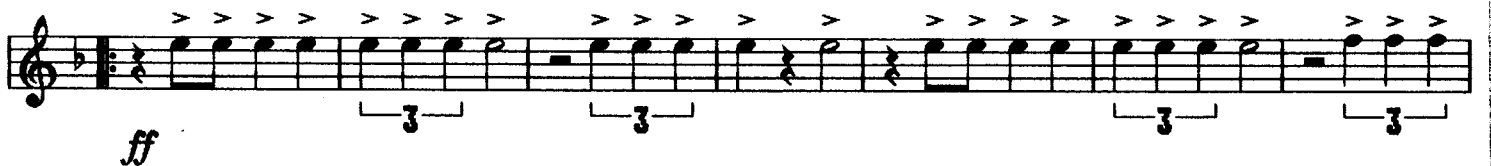
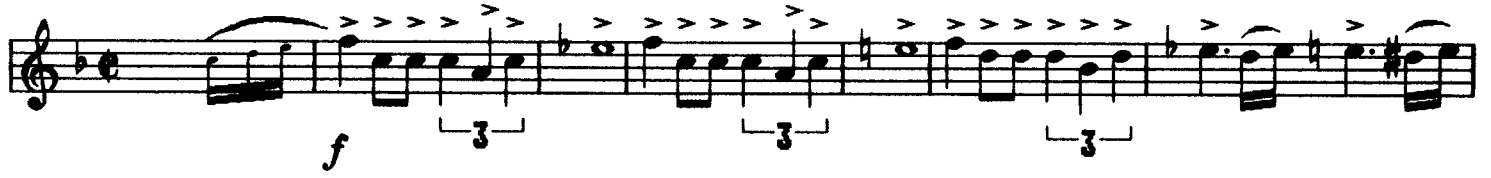


# Bundestreu e

Flügelhorn 1 in Bb

Musik & Arr.  
Heinz W. Hilgers



Musical staff with a treble clef and a key signature of one flat. The staff contains a sequence of notes with accents (>) above them. There are three groups of triplets, each indicated by a bracket with the number '3' underneath. The notes are mostly eighth and sixteenth notes.

Musical staff with a treble clef and a key signature of one flat. It features a first ending (1) and a second ending (2) with repeat signs. Below the staff, there is a *D.S.* marking with a double bar line and a repeat sign. The word **Trio** is written above the staff. The music includes a *ff* dynamic marking and a slur over a group of notes. There are also accents (>) above the notes.

Musical staff with a treble clef and a key signature of one flat. It begins with a measure rest followed by the number **15**. The music consists of eighth and sixteenth notes with accents (>) above them. A *mf* dynamic marking is placed below the staff.

Musical staff with a treble clef and a key signature of one flat. It features a hairpin crescendo symbol (two parallel lines that increase in length) below the staff. The music includes eighth and sixteenth notes with accents (>) above them. A *f* dynamic marking is placed below the staff. There are also triplets indicated by brackets with the number '3' underneath.

Musical staff with a treble clef and a key signature of one flat. The staff contains a sequence of notes with accents (>) above them. There are three groups of triplets, each indicated by a bracket with the number '3' underneath. The notes are mostly eighth and sixteenth notes.

Musical staff with a treble clef and a key signature of one flat. It features a first ending (1) and a second ending (2) with repeat signs. The music includes eighth and sixteenth notes with accents (>) above them. There are also triplets indicated by brackets with the number '3' underneath.